

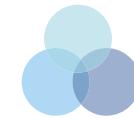
---

c o n t e m p o

---

D O R A L

A UNIQUE LIFESTYLE



WELCOME TO CONTEMPO DORAL

A STUNNING AND VERY PRIVATE  
GATED COMMUNITY OF ONLY 44  
3-LEVEL TOWNHOMES.

---



An exclusive 3-story townhouse in Doral that features 4 bedrooms, 3.5 bathrooms with a rooftop terrace. Proximity to the finest restaurants, shops and schools Doral has to offer. Your choices for entertainment are endless.

EXCLUSIVE COMMUNITY

The residences entrance is through an amazing courtyard with beautiful fountains that exalt the modern-contemporary style of the community which include large entertainment terraces in all units.

MODERN LIVING



### COMMUNITY FEATURES

- Gated Entrance with Access Controlled Entry System
- Pavers at Entrance
- Professional Landscape
- Townhomes Entrance through Courtyards with Fountains

### CONSTRUCTION FEATURES

- Steel Reinforced Monolithic Concrete Footings
- Concrete Block Walls with Steel Reinforced & Poured Tie Beam Construction
- Concrete Roof Slab
- High Energy Efficient Air Conditioning

### EXTERIOR FEATURES

- Smooth Finish Stucco
- Impact Windows & Glass Doors
- Fully Sodded & Landscaped Site

### THE ELEGANT BATHROOMS

- Designer Style Cabinets
- Porcelain Tiles
- Designer Style Faucets
- Designer Style Fixtures
- Roman Tubs in all Master Bathrooms
- His & Hers Vanities
- Frameless Glass Door in Showers

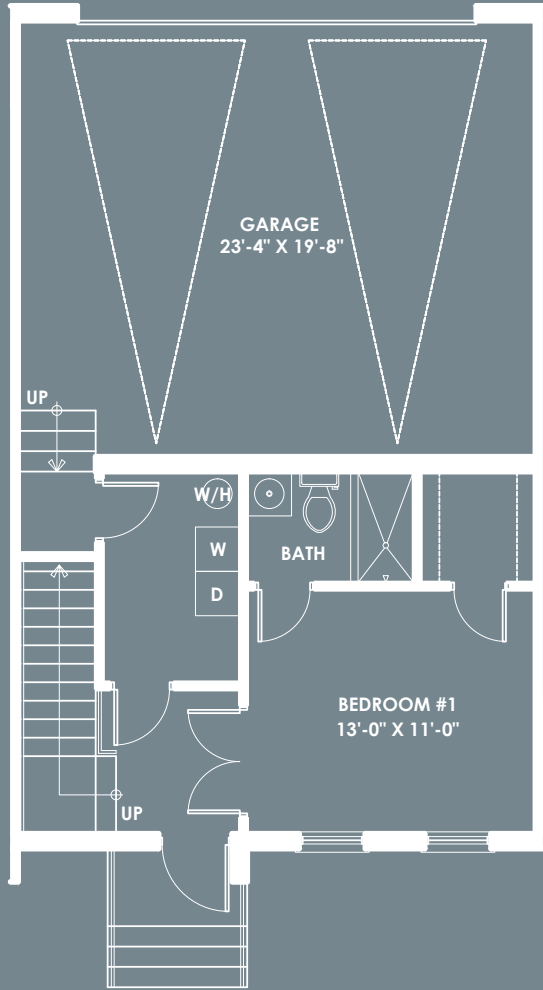
### DISTINCTIVE INTERIOR

- Smooth Walls & Ceilings throughout
- 24" x 24" Porcelain Tile at Foyer and Main Floor
- Engineered Wood in Master Bedrooms
- Designers Carpet in Stairs and Bedrooms
- Security System
- Flat Panel Interior Doors with Casings
- Garage Door with Automatic
- Door Opener
- Smart Cable Wiring
- Decora Style Light Switches
- Electric Door Chime
- Programmable Readout Thermostat
- 5 1/4" Wood Baseboards
- Full Capacity Washer and Dryer

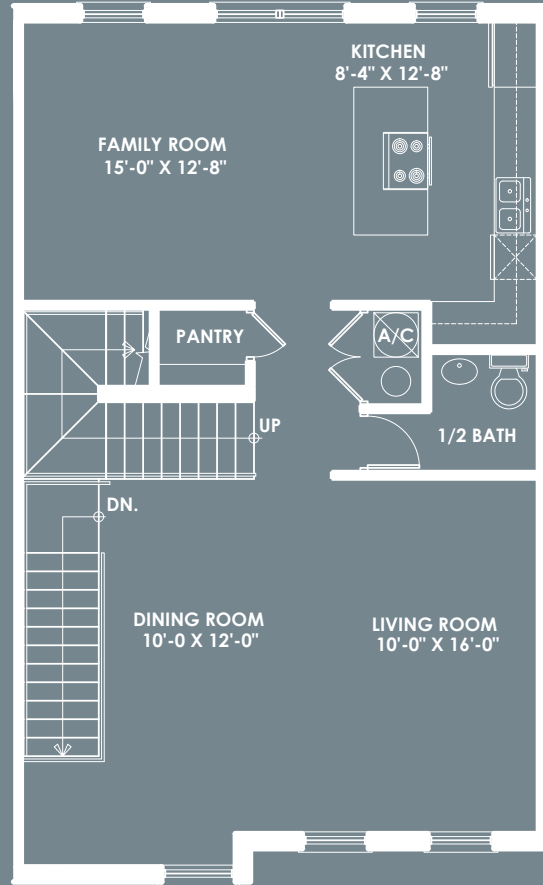
### THE GOURMET KITCHEN

- Italian Cabinets with Islands
- Quartz Countertop and Backsplash
- Dual Compartment Undermount Stainless Steel Sink
- Pullout Faucet
- Stainless Steel Appliances
  - 36" Side by Side Refrigerator
  - 36" Gas Range and Oven
  - 30" Microwave
  - 36" Canopy Island Hoods
- Dishwasher
- Waste Disposal

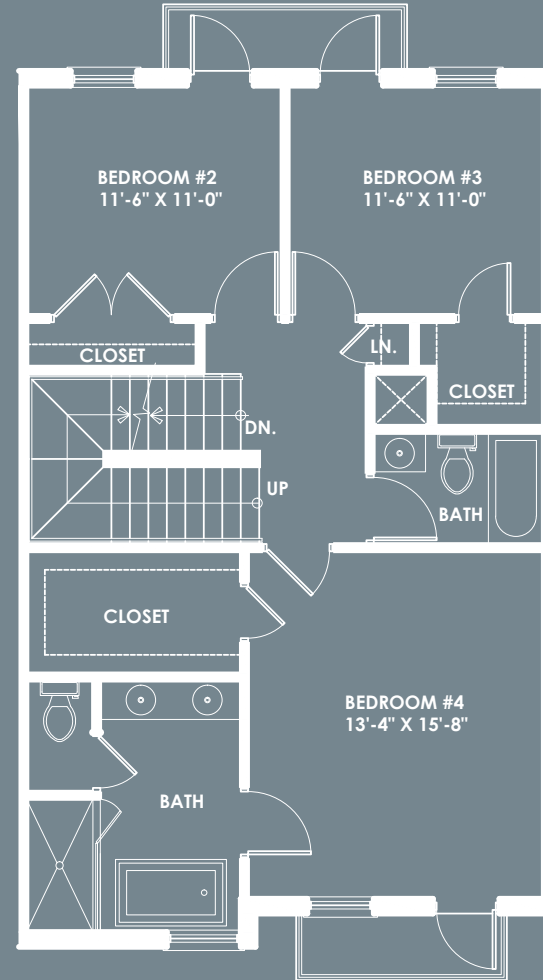
# UNIT A



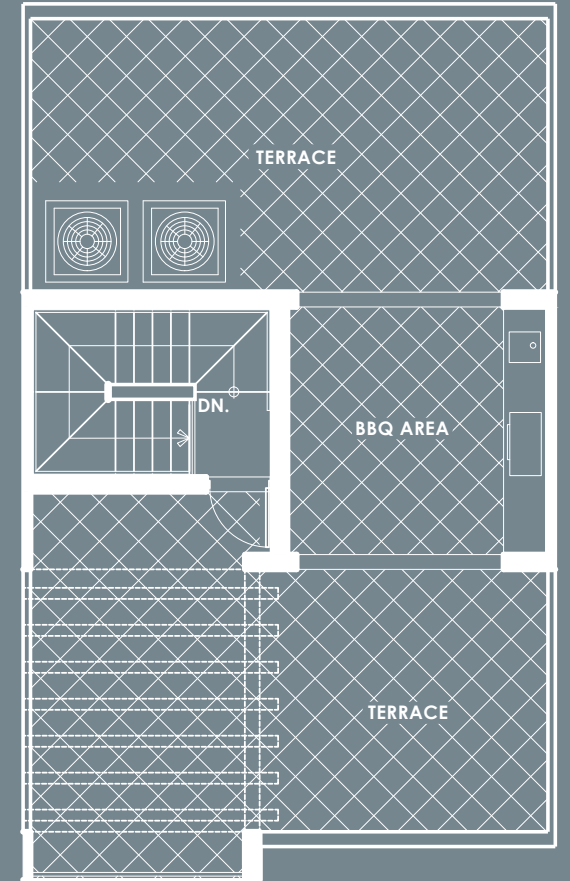
GROUND FLOOR



SECOND FLOOR

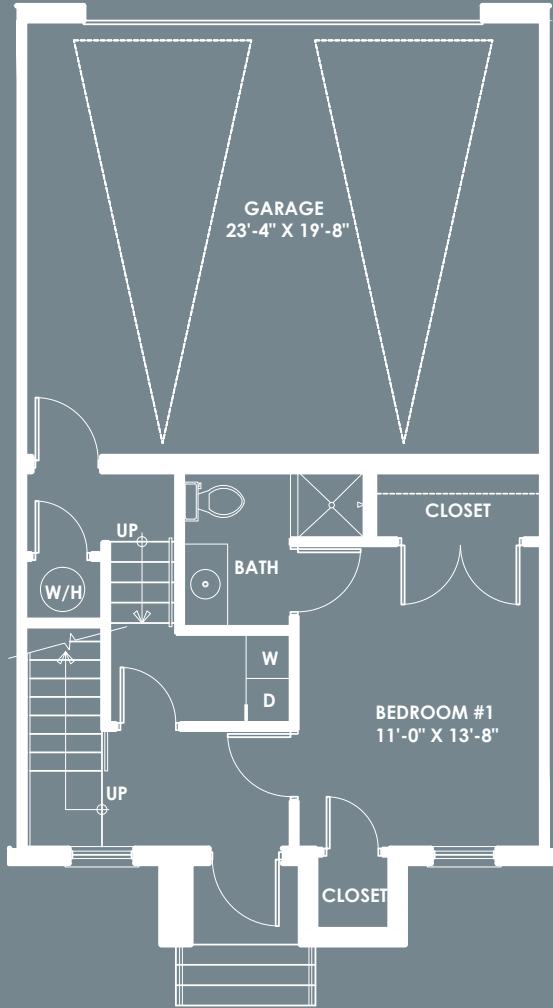


THIRD FLOOR

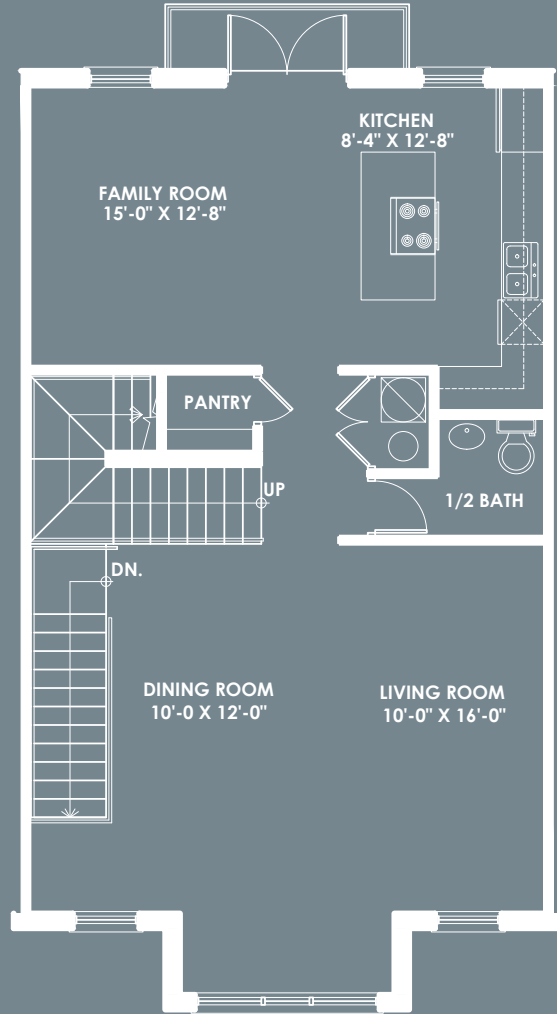


ROOF DECK

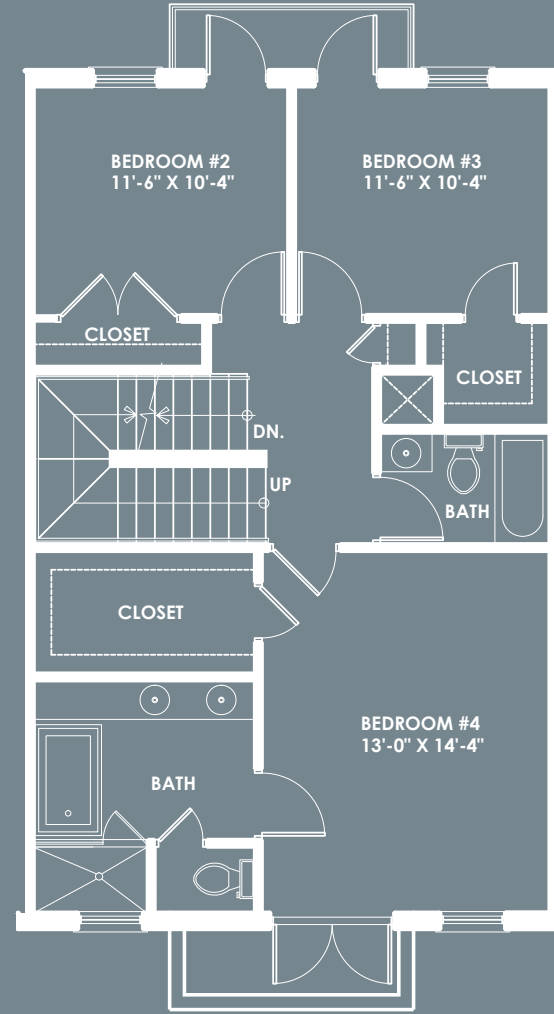
# UNIT B



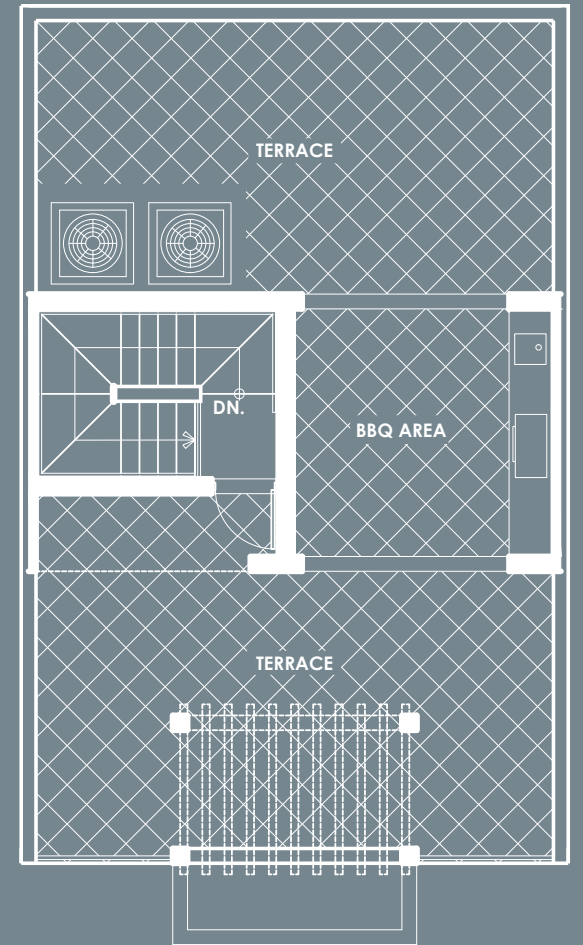
GROUND FLOOR



SECOND FLOOR

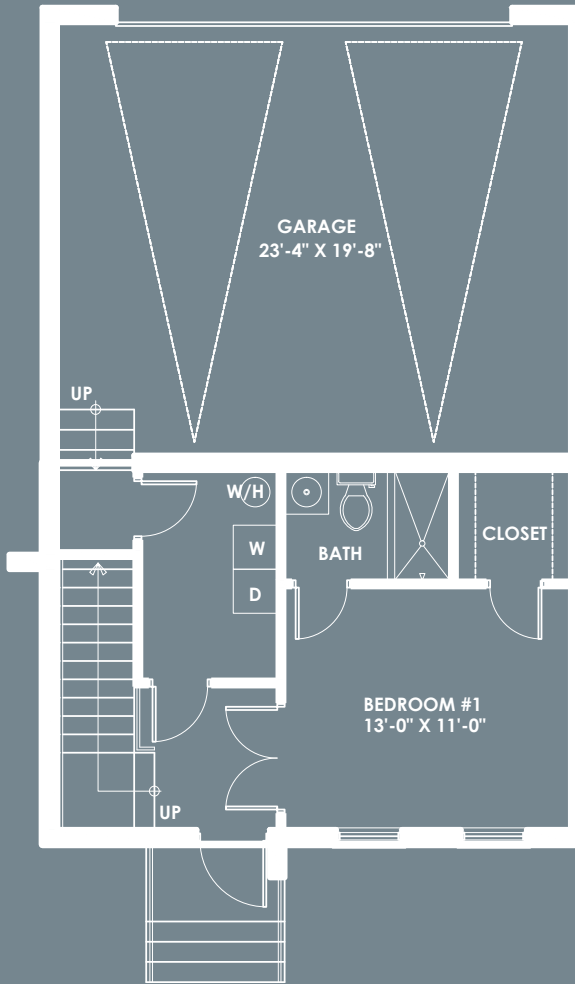


THIRD FLOOR

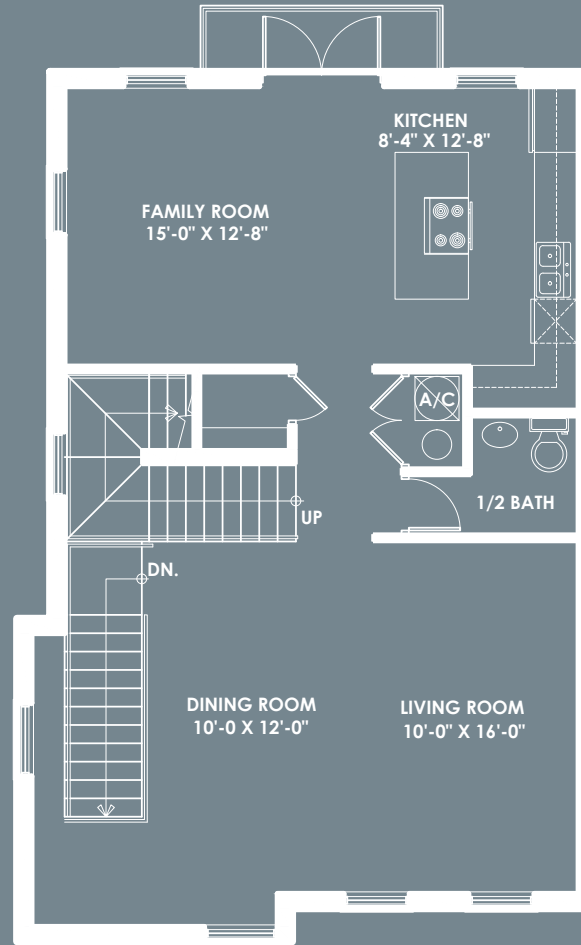


ROOF DECK

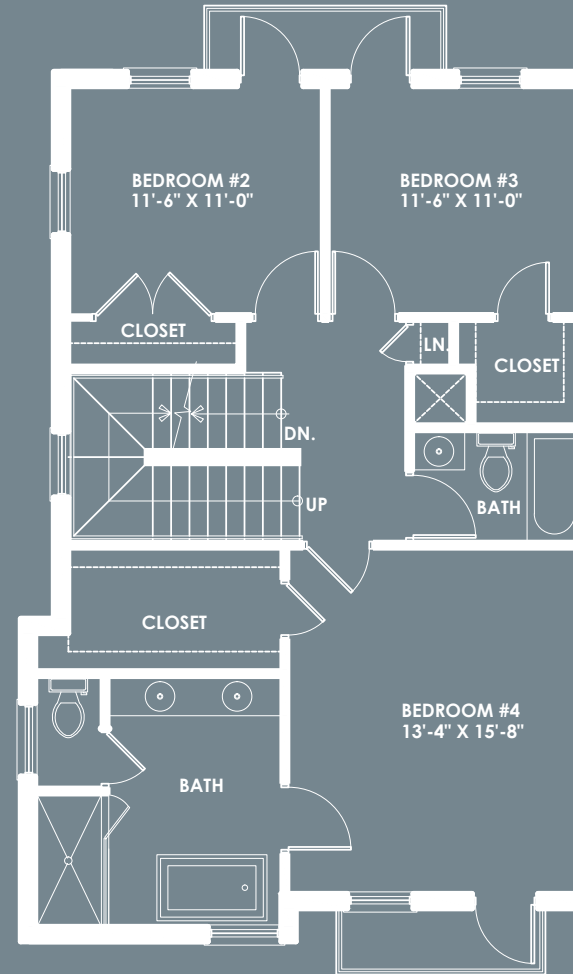
# UNIT C



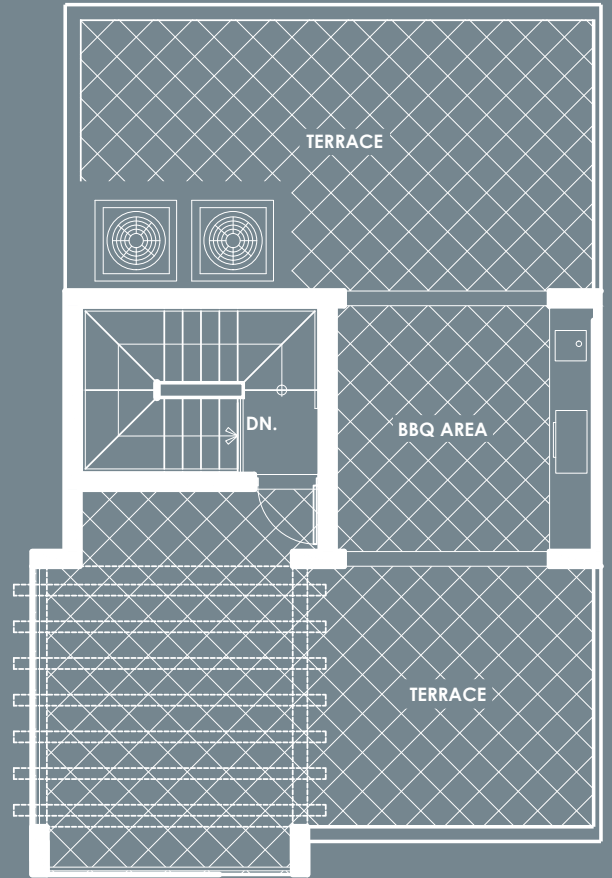
GROUND FLOOR



SECOND FLOOR



THIRD FLOOR



ROOF DECK





Broker participation welcome. Oral representations cannot be relied upon as correctly stating representations of the Developer. For correct representations, make reference to the documents required by Section 718.503 of the Florida Statutes, to be furnished by the Developer to a Buyer or Lessee. Obtain the property report or prospectus required by law and read it before signing anything. This advertisement does not constitute and an offer or solicitation where prior registration or other qualification is required. Equal Housing Opportunity. All plans and renderings are conceptual and are subject to change without notice. Images and renderings are all artist conceptual compositions.